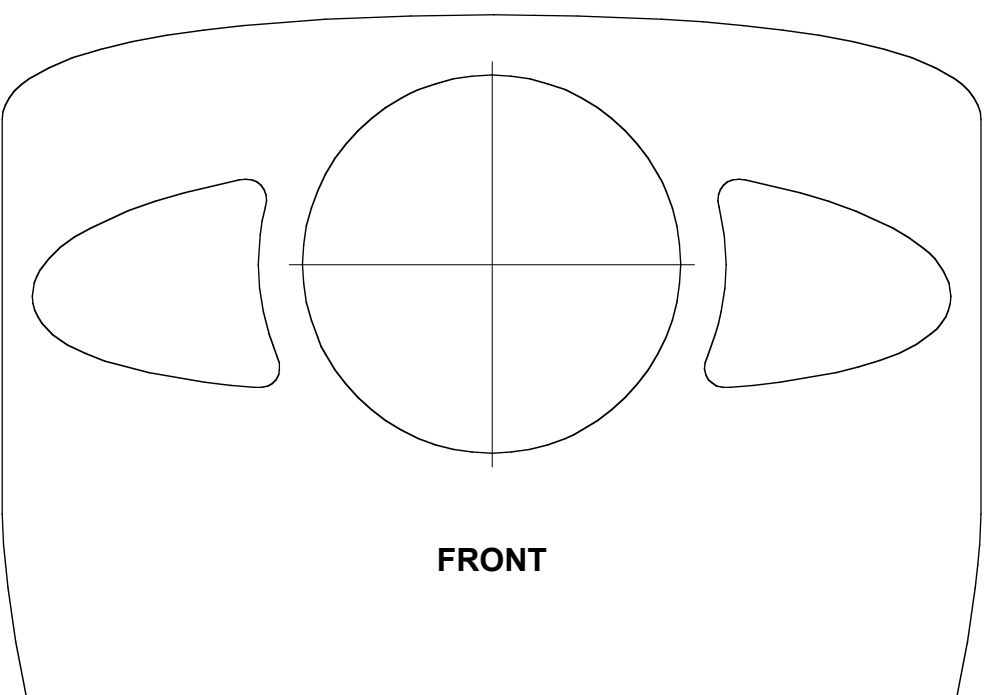
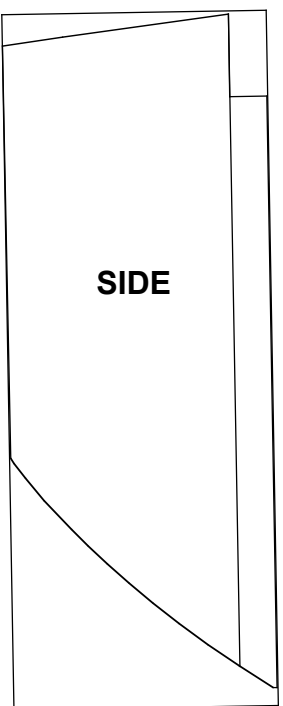
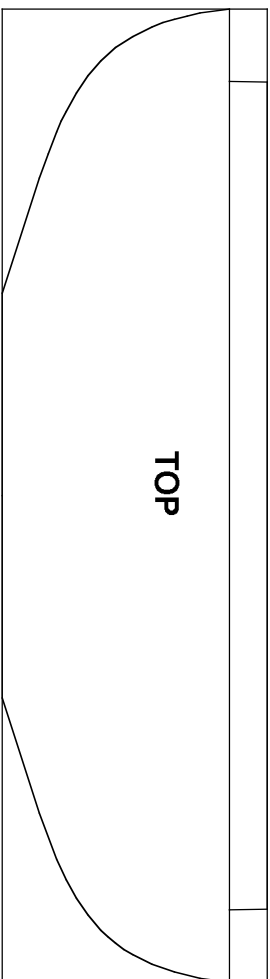


DemonGti's **EDGE 540**

Nose Shape

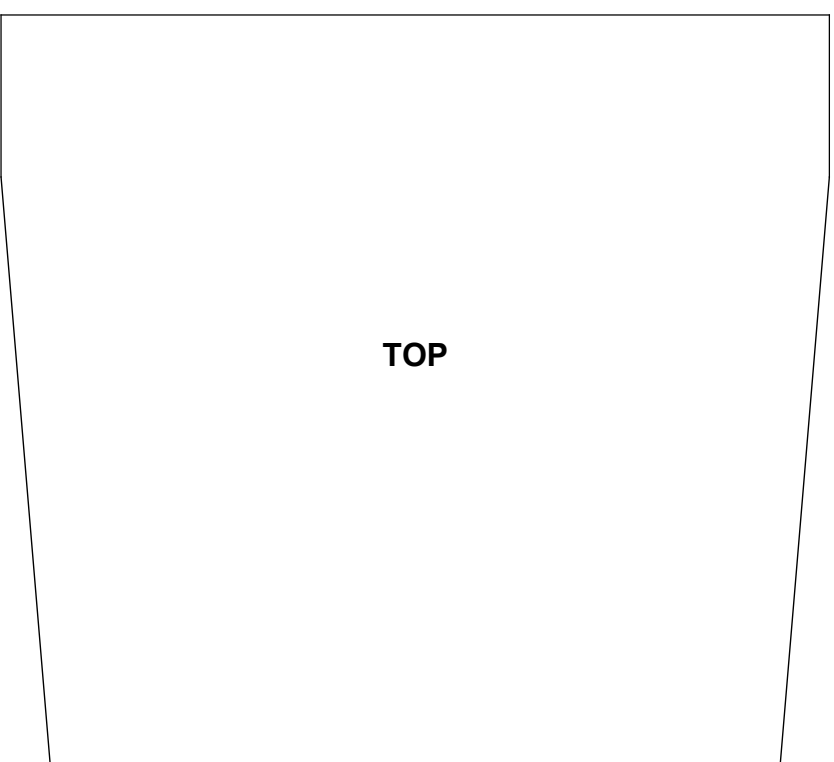
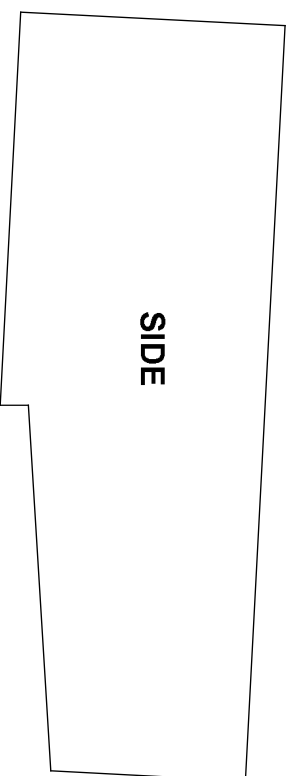
Print this page and cut and roughly sand this out of 35mm Polystyrene sheet or 4 pieces of 10mm Sheet sandwiched together with PU glue. Final sanding will be done later when nose is fixed to fuselage.



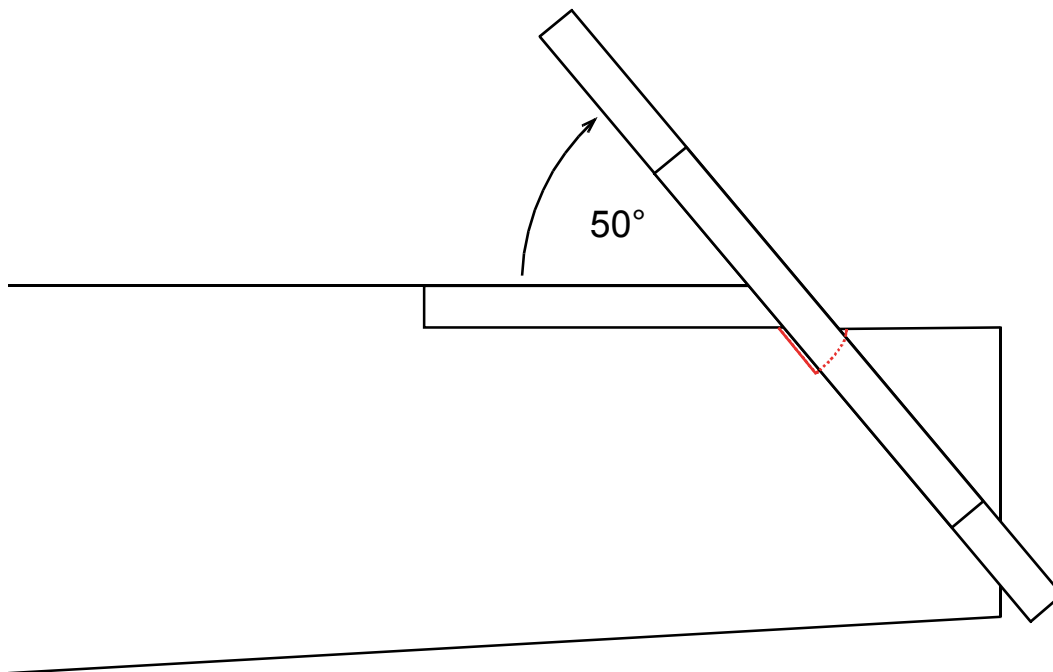
DemonGti's **EDGE 540**

Landing Gear base

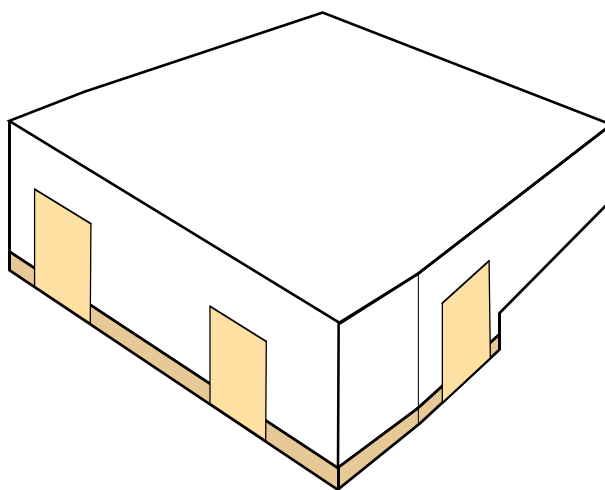
Print this page and cut this out of 35mm Polystyrene sheet or 4 pieces of 10mm Sheet sandwiched together with PU glue. Also cut out a piece of 3mm light ply wood to act as the base to which you will screw the landing gear.



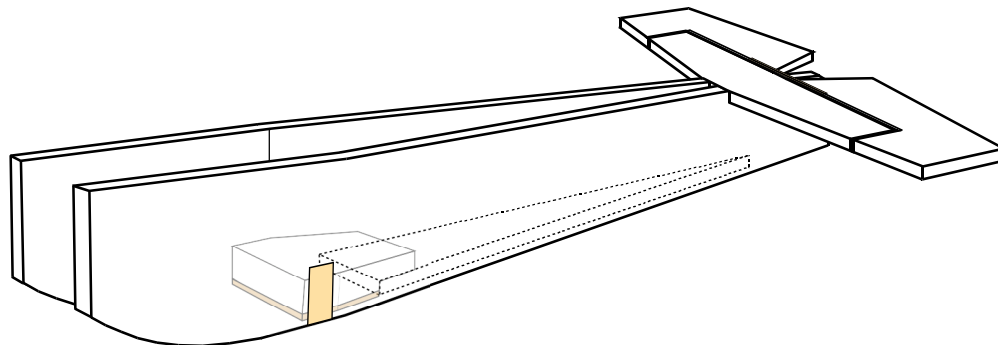
- 29** Trim out space for the elevator to have at least 50° of movement.



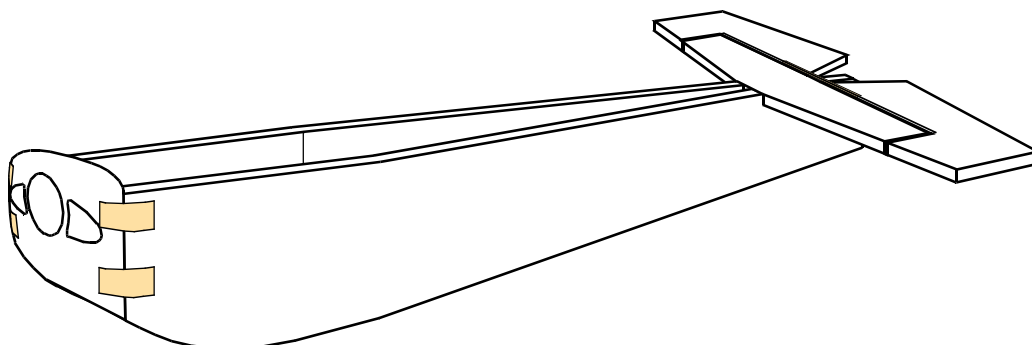
- 30** Use PU glue to attach 3mm ply wood to the LG base. Secure with tape and leave to cure.



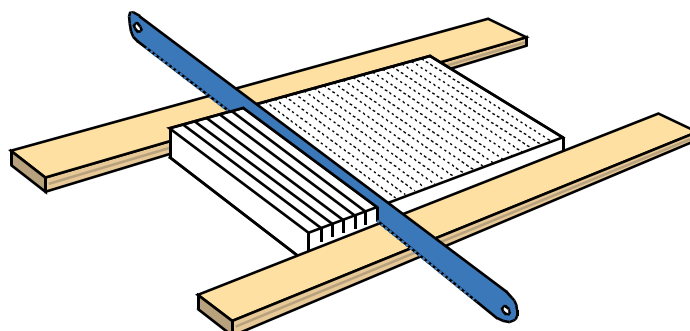
- 31** Fix landing gear base in place with PU glue and tape secure.



- 32** Fix nose to front of fuselage with PU glue and tape in position to cure.



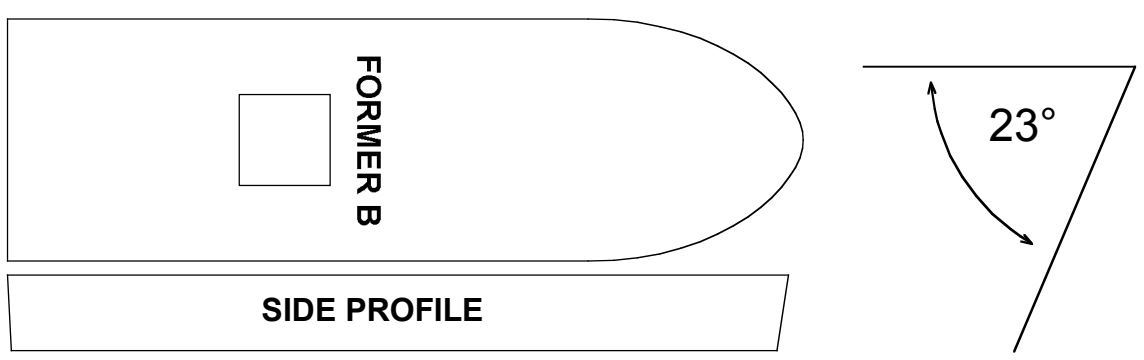
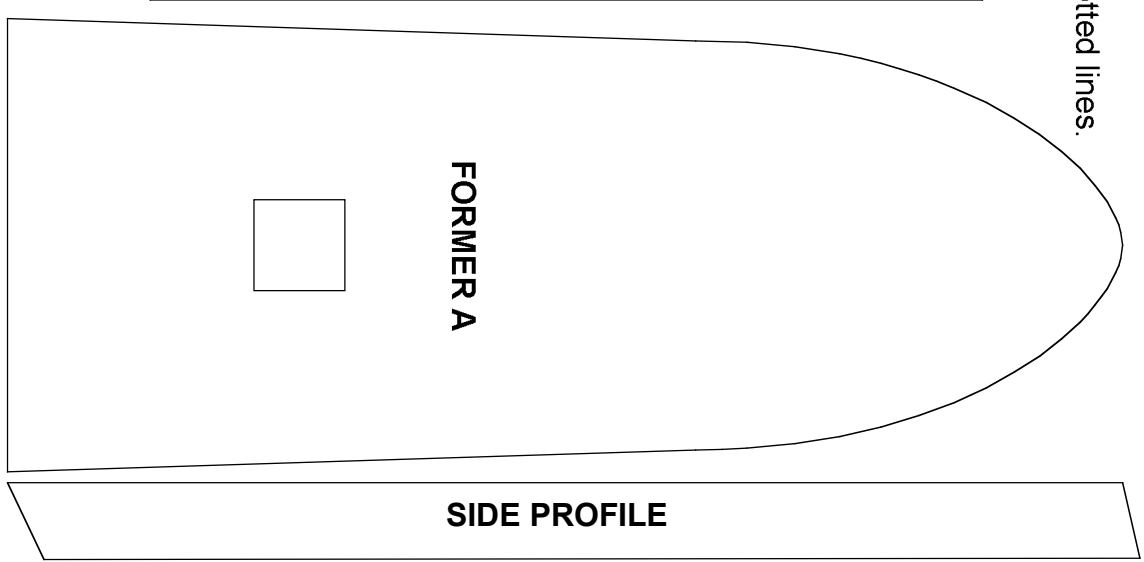
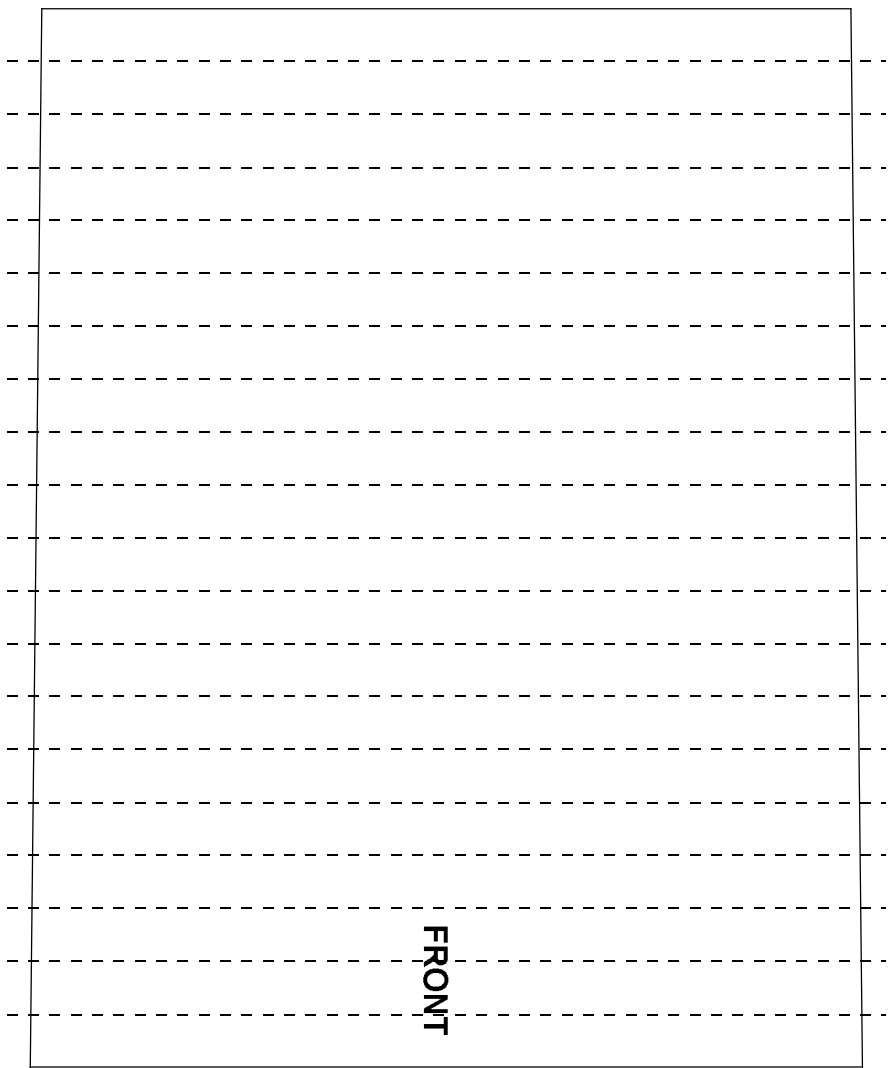
- 33** Print page 22 and prepare the panel by cutting half way through the thickness of the material with a coarse hacksaw blade on the dotted lines. An easy way to do this is to use a $\pm 5\text{mm}$ thick piece of plywood etc. on either side to prevent the blade from cutting deeper than you want. The cuts allow the sheet to bend to take the shape of the nose of the plane.



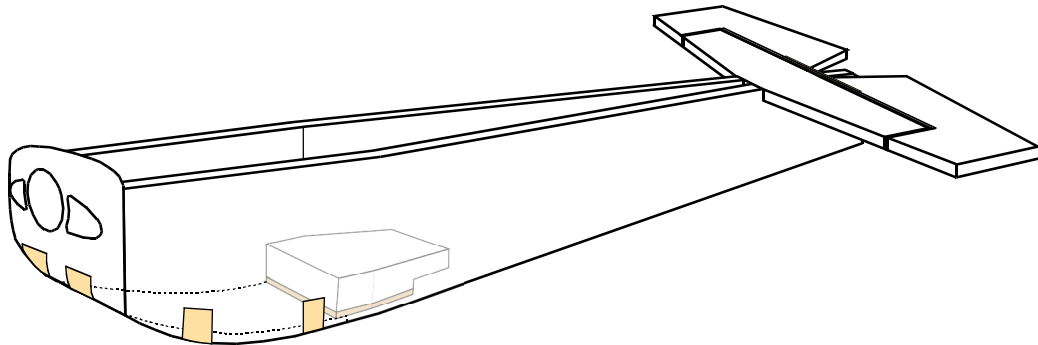
DemonGti's **EDGE 540**

Nose to LG filler and Fuselage formers

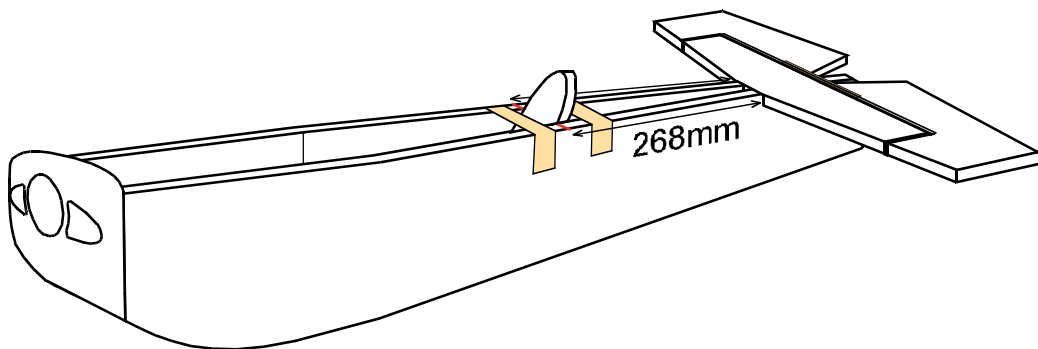
Print this page and cut this out of 10mm Polystyrene sheet.
Use a hacksaw blade to cut about half way through the material on the dotted lines.



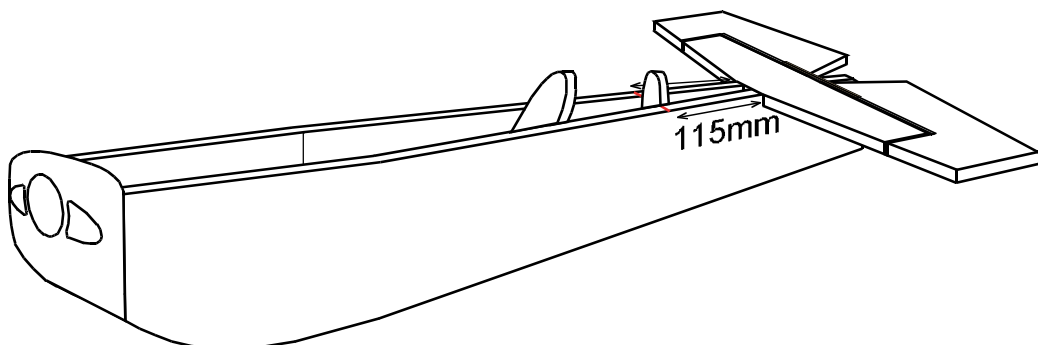
- 34** Glue in the filler piece with PU glue and tape in position. There will be an overlap onto the wooden LG mount (cut grooves face inward)



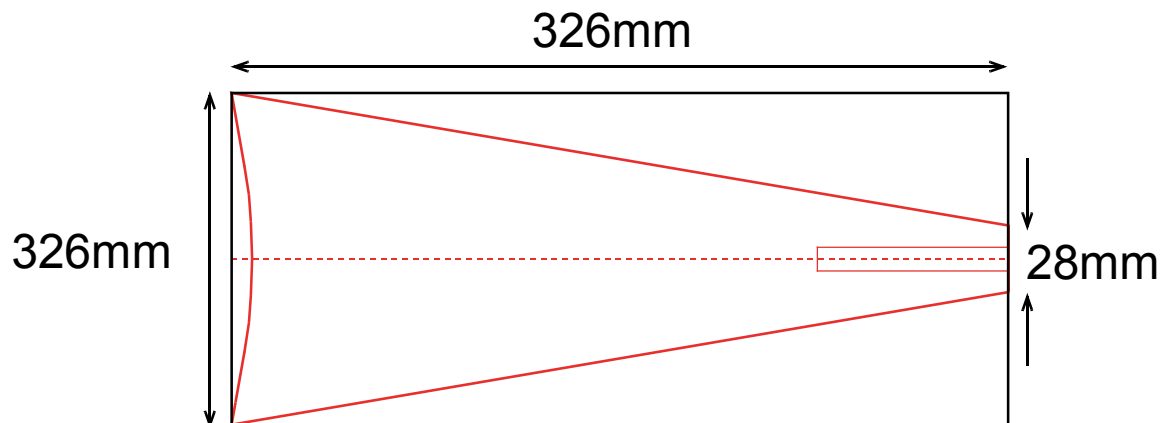
- 35** Measure 268mm from root of horizontal stab. and draw a line on both side of the top of the fuselage. Use the "angle" from page 21 to glue Former A into place with PU glue (Behind the line). Tape fuselage sides together in front and behind the former to cure.



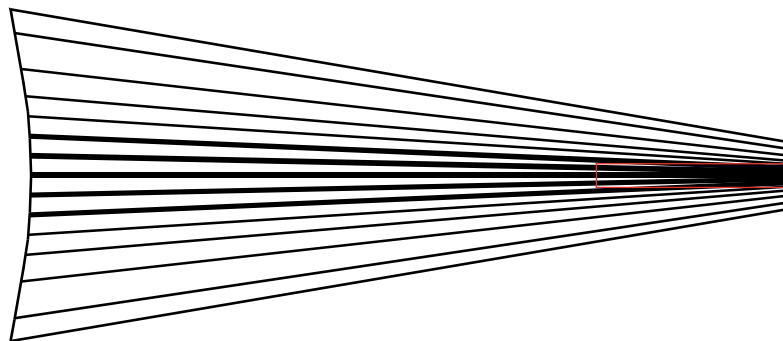
- 36** Measure 115mm from root of horizontal stab. and draw a line on both side of the top of the fuselage. Insert Former B with PU glue perpendicular to top of the fuselage also behind the line you made.



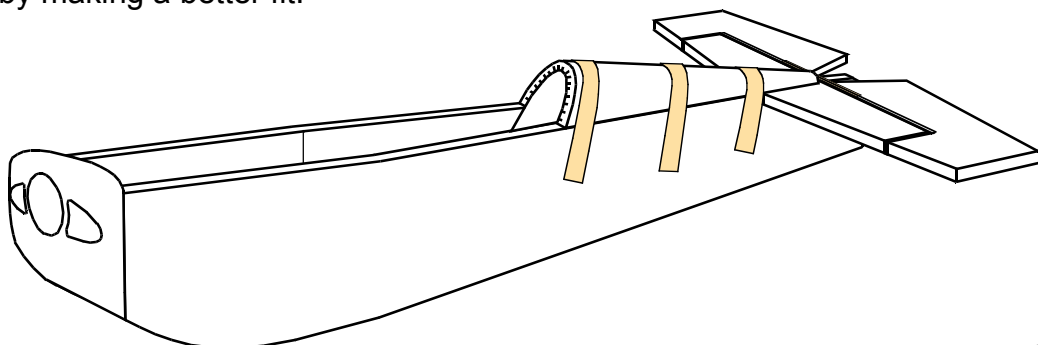
- 37** Cut out a rectangle from your 10mm material measuring 139 x 326mm. Mark the centre and draw a mark 14mm on either side of the centre on one end. Mark a 10 x 80mm section where the vertical stabiliser will fit. The shape on page 25 should be used to get an accurate curve for the canopy end.



- 38** Cut out the panel but **not** the notch for the vertical stab. Use the same technique as before to cut grooves on one side of the panel. Follow the diagram below, the thick lines represent actual "V" cut out to allow the panel to bend more.



- 39** Drizzle PU glue into the cut grooves and fit to the fuselage. Tape in position to cure. Any gaps will be filled by the expanding PU, if the panel appears too small just tape down securely over the areas where the formers are to force them to compress a little and thereby making a better fit.



DemonGti's **EDGE 540**

Fuselage skin

Print this page and use it to get the correct shape of the skin for fuse tail section.

